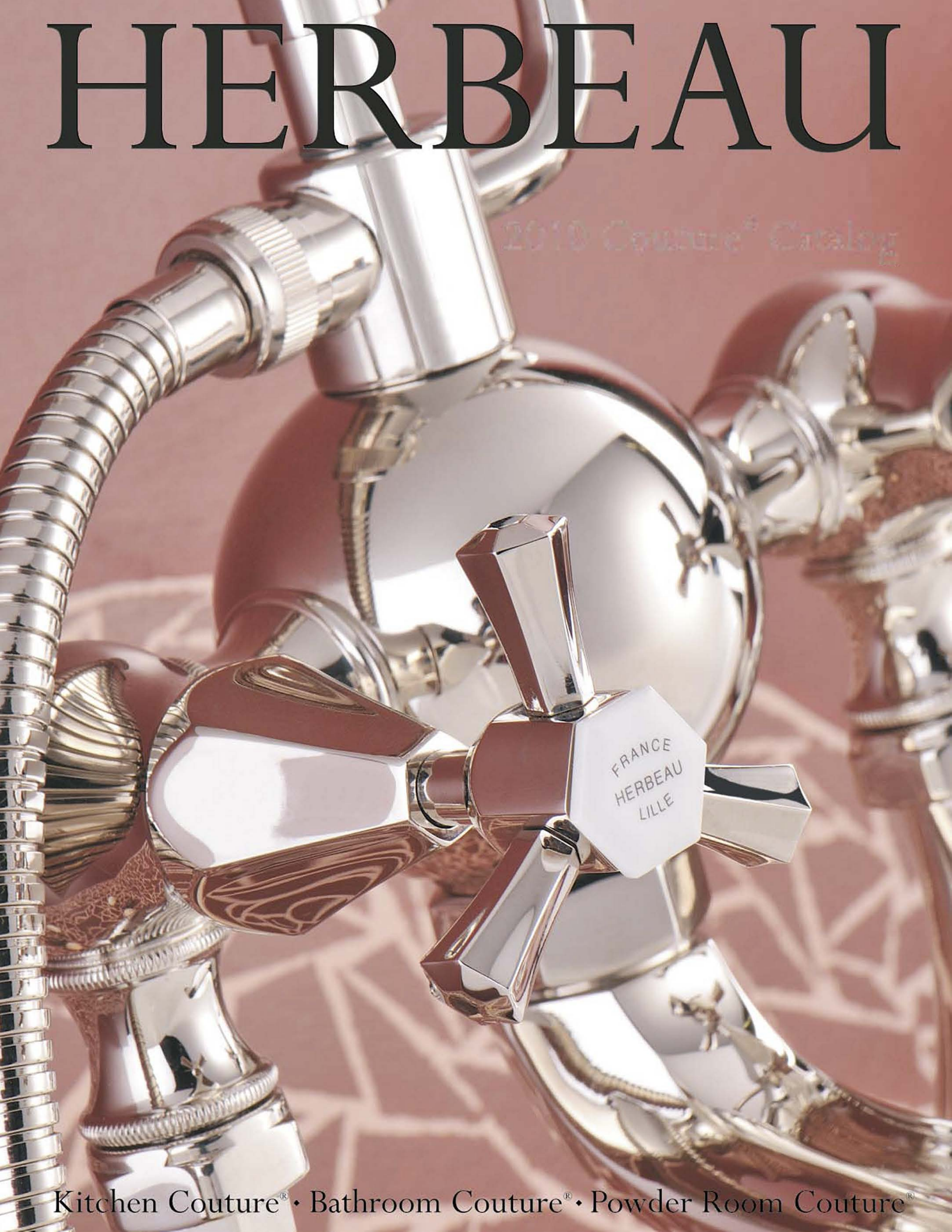


HERBEAU

2010 Couture® Catalog



Kitchen Couture® • Bathroom Couture® • Powder Room Couture®



Above: 4603.20 “Luberon” Fireclay Farmhouse Sink in White (20) and 5701.63 Wooden Stand. Shown with 4107.63.58 “De Dion” Wall Mounted Single Lever Mixer in Polished Copper & Brass (58). *Below:* 4614.20 “Art Nouveau” Fireclay Farmhouse Sink. Shown in White (20) with 4106.63.56 “Estelle” Wall Mounted Single Lever Mixer in Polished Nickel (56).



Above: 4609.20 and 4610.20 Fireclay Drop-In / Undermount Sinks. Shown in White (20) with 4110.63.59 “Flamande” Single Lever Mixer with Handspray in Weathered Copper and Brass (59). *Below:* 4613.20 “Luberon” Fireclay Double Farmhouse Sink. Shown in White (20) with 3027.20.48 “Royale” Two-Hole Kitchen Mixer with Handspray in Polished Chrome (48).



**4603.25 “Luberon”
Fireclay Farmhouse
Sink.** Measures 30” x
19” x 10” D.
Internal: 28” x 16 1/4”
x 9” D. Available in six
solid colors and twelve
handpainted finishes.
Shown in Red Boreal
(25).



**4603.26 “Luberon”
Fireclay Farmhouse
Sink.** Measures 30” x
19” x 10” D.
Internal: 28” x 16
1/4” x 9” D. Available
in six solid colors and
twelve handpainted
finishes. Shown in
Sepia Brown (26).



**4603.02.20 “Luberon”
Fireclay Farmhouse
Sink.** Measures 30” x
19” x 10” D.
Internal: 28” x 16 1/4”
x 9” D. Available in six
solid colors and twelve
handpainted finishes.
Shown in Moustier
Bleu (02) and White
(20).



Above: 2 x 4307.66 “Saone” Round Bowls in Hammered Satin Nickel (66).
Shown with 4101.63.60 “De Dion” Single Lever Mixer in Satin Nickel (60).
Below: 4302.65 “Moselle” Round Bowl. Shown in Hammered Polished Nickel
(65) with 4203.20.56 “Namur” Mixer in Polished Nickel (56).



**3023.70 “Royale”
Wall Mounted Two-
Hole Kitchen Mixer.** Wall mounted faucets add instant character to a room. Not only is the Royale pleasing to the eye, it is a pleasure to use. Shown in Weathered Brass (70).



**3027.20.60 “Royale”
Two-Hole Mixer
with Handspray.** Combining the best of old and new, the Royale features a unique two-hole arched bridge connection. Adjustable 6”- 8” spread. Shown in Satin Nickel (60).



**3029.56 “Royale”
Potfiller Faucet.** This handsome faucet blends functionality with authentic French styling, making *le potfiller Royale* the perfect kitchen accessory. The spout extends 21” from the wall and folds flat when not in use. Cold water only. Shown in Polished Nickel (56).

4102.63.59 “De Dion”
Single Lever Mixer &
Handspray. Designed
by Jean Herbeau, the
iconic gearshift handle
and rustic design of the
De Dion were inspired
by memories of his
grandfather’s prized
1904 De Dion-Bouton
automobile. Shown in
Weathered Copper &
Brass (59).



4104.63.56 “Estelle”
Single Lever Mixer
with Handspray.
Based on an original
19th Century design,
the Estelle faucet
combines 21st
Century convenience
with retro good looks.
Shown in Polished
Nickel (56).



4120.20.70 “Royale”
Single Lever Mixer.
Inspired by the
fixtures used in
French cafés and
bistros, the Royale
is traditional, yet
informal. Shown in
Weathered Brass (70).





**4202.20.60 “Ostende”
Single-Hole Mixer.**

The Ostende faucet captures the spirit of the sea with a jaunty seahorse motif and a nod to the charming Flemish port city of Ostende. Shown in Satin Nickel (60) with the 4623.20.1 “Petite Luberon” Fireclay Farmhouse in White (20). Perfect for a butler’s pantry, wet bar or barista station, the Petite Luberon fireclay sink features a 3 1/2” rear deck that can accommodate up to three fixtures.



**4203.20.59 “Namur”
Single-Hole Mixer.**

A flowing design and curved 6” spout makes the Namur an inspired choice for a bar, prep area or bathroom. Shown in Weathered Copper and Brass (59) with 4301.59 “Seine” Oval Bowl in Weathered Copper (59).

4110.63.59
**“Flamande” Single
Lever Mixer with
Handspray in
Weathered Copper
& Brass (59).**

Handcrafted out of the highest quality materials, the Flamande is a stylish and practical choice for a farmhouse sink.



**4205.63.56 “Valence”
Single-Hole Mixer in
Polished Nickel (56).**
The Valence faucet
adds a touch of rustic
authenticity to a
period kitchen.



**4207.63.59 “Valence”
Single-Hole Mixer
with Handspray.** Add
a touch of French
Country charm to a
kitchen or prep area
with this appealing
faucet. Shown in
Weathered Copper
and Brass (59).





0320.20 and 0322.48 “Empire” Washbasin and Metal Washstand in Polished Chrome (48). The art of an ideal—the Empire takes its design cues from 18th Century Neoclassical architecture. Shown with **3003.48 “Royale” Two-Hole Bridge Faucet** with optional **Pop-Up Waste (3080.48)** in Polished Chrome (48).



Above: 0303.20 and 0304.20
"Charleston" Washbasin and Pedestal.
Below: 0340.56 & 0342.20 "Monarque"
Washbasin and Metal Washstand.

Above: 3402.70 "Royale" Exp. Therm.
Shower Set in Weath. Brass (70). *Below:*
3701.56 "Monarque" Exp. Therm. Tub
& Shower Set in Pol. Nickel (56).



Above: 0350.20 & 0352.20 “Bel’ Epoque” Lavatory Table in White with Pair of Ceramic Legs & 3602.56 “Monarque” Widespread Lav. Set in Pol. Nickel (56).
Below: 0705.02 Cast Iron “Josephine” Bathtub with 2236.52 “Pompadour” Deck Mounted Tub Filler and 2239.52 Free Standing Adduction Pipes.



Above: 3630.56 “Monarque” Exp. Tub & Shower Mixer in Pol. Nickel (56).
Below: 2232.53 “Pompadour” Wide-spread Lavatory Set in Old Silver (53).

Above: 3030.48 “Royale” Exposed Tub & Shower Mixer in Pol. Chrome (48).
Below: 2236.52 “Pompadour” Deck-mounted Tub Filler in Old Gold (52).



**3002.70 “Royale”
Widespread Lavatory
Set.** Based on an
original turn-of-the
century design by
Desire Herbeau, the
award-winning Royale
faucet is often imitated
but never duplicated.
Shown in Weathered
Brass (70).



**3003.60 “Royale”
Two-Hole Basin Set.**
Authentic down to the
signature red and blue
taps, the Royale bridge
faucet captures the
joie de vive of the Belle
Epoque era. Shown
in Satin Nickel (60)
with optional Pop-Up
Waste (3080.60).



**3601.57 “Monarque”
Single-Hole Basin
Mixer.** The soft curves
and hexagon detailing
on this basin mixer
brings haute style to
the bath. Features a
swiveling spout and
white ceramic inserts.
Shown in Brushed
Nickel (57).

**3602.57 “Monarque”
Widespread Lavatory
Set.** Sleek but with a
hint of softness, the
hexagon-shaped cross
handles and spout
of the Monarque
reflects the style of
1920’s Paris. Shown in
Brushed Nickel (57).



**3603.70 “Monarque”
Two-Hole Basin Set.**
This unique hexagon-
shaped bridge faucet
is the latest addition
to the Monarque
Bathroom Couture®
Collection. Shown in
Weathered Brass (70)
with optional Pop-Up
Waste (3680.70).



**3607.57 “Monarque”
Wall Mounted Three-
Hole Set.** Art Deco
style in a sophisticated
wall mounted bath
set. Featuring a 6 ¾”
swiveling spout and 11
¾” spread. Shown in
Brushed Nickel (57).



Powder Room Couture®



5830.63 "Bonne Maman" Bathroom Cabinet in Antique Stain (63). Shown with 5831.20 "Bonne Maman" Fireclay Countertop and 0409.20 Vitreous China Vessel Bowl in White (20) with 3008.49 "Royale" Wall Mounted Three-Hole Set in Solibrass (49) and 1420.20 "Bonne Maman" Pitcher in White (20).



Above: 0106.20 “Carline” Corner Sink with 2121.56 “Sphere” Cover and 3050.56 “Royale Verseuse” Single-Hole Mixer in Polished Nickel (56).

Below: 0201.02 “Niche” Fountain, 1102.02 Soap Dish and 1112.02.53 Towel Ring in Moustier Bleu (02) with 2113.53 “Retro” Tap in Old Silver (53).

5501 “Dagobert” Wooden Toilet Throne. King Dagobert’s reign (629 to 638 AD) as last ruler of the French Merovingian dynasty has assured his place in history books, but his legacy lives on in this unique piece.

The classic French children’s song, “Le Bon Roi Dagobert,” tells the story of King Dagobert arriving late for an important council meeting with his trousers on inside out. As a fitting introduction to this whimsical toilet, a music box begins playing “Le Bon Roi Dagobert” as the lid is raised.

For the *piece de resistance*, the flush mechanism is connected to a pull chain and bell, thus letting everyone know that all is well in the kingdom.



Handcrafted

At Herbeau, the human touch is present in every stage of the manufacturing process. Founded in 1857, Herbeau represents 157 years of expertise in the manufacture of fine kitchen and bath fixtures. The tradition of handcrafted artistry has been passed down from father to son for five generations. When appropriate, state-of-the-art technology is used to ensure each item retains its authentic period charm while complying with strict international plumbing standards. This level of Old World craftsmanship gives the products a resilient beauty no machine process can duplicate.

Where Tradition is an Art

Herbeau combines authentic historical design with the finest materials to produce kitchen and bath products worthy of being called Couture®. The word 'Couture' dates back to Louis XIV and is widely used to describe items that are luxurious, unique and custom made. Copper faucets are soldered by hand, then individually polished, plated and assembled. The intricate texture of the hand-hammered metal bowls is achieved through the use of a hammer and an anvil. Each handpainted sink or bowl is fired and signed by the artist. Meticulously handcrafted and sustainably designed, Herbeau Couture® is the ultimate expression of L'Art du Sanitaire.

Where to Purchase Herbeau

Herbeau Couture® can be purchased through authorized Herbeau Kitchen and Bath Showrooms. These showrooms are staffed by knowledgeable professionals trained in both the technical and design features of Herbeau products. We invite you to visit the nearest display showroom and personally experience Herbeau Couture®. To locate an authorized Herbeau showroom please visit www.Herbeau.com or call our Naples, Florida headquarters at 800-547-1608. We offer complete Customer Care and Technical Support services for assistance before, during and after the final purchase.



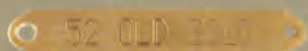
Patterns & Finishes



(48) Polished Chrome



(49) Solibrass



(52) Old Gold (Unlacquered)



(53) Old Silver (Unlacquered)



(55) Polished Brass (Unlacquered)



(56) Polished Nickel



(57) Brushed Nickel



(58) Polished Copper (& Brass Unlacq.)



(59) Weathered Copper (& Brass)



(60) Satin Nickel



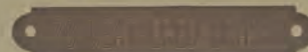
(61) Hammered Weathered Copper



(65) Hammered Polished Nickel



(66) Hammered Satin Nickel



(70) Weathered Brass



(77) Hammered Brushed Nickel



(01) Moustier Polychrome



(07) Berain Rose



(02) Moustier Bleu



(08) Berain Vert



(03) Moustier Rose



(09) Berain Bleu



(04) Vieux Rouen



(10) Romantique



(05) Sceau Rose



(11) Rouen Marly



(06) Sceau Bleu



(21) Avesnes



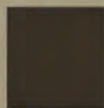
(73) Ashwood (63)



(20) Fireclay (30)



(25) Fireclay (26)



(27) Fireclay (28)



Herbeau®
L'Art du Sanitaire depuis 1857

Herbeau Creations of America

Toll Free: (800) 547 1608, Phone (239) 417 5368

Fax: (800) 547 0084 - www.Herbeau.com